



Table of Contents

1. Welcome to Sportiiiis
2. What's in the Box
3. Getting to know Sportiiiis
4. Charging Sportiiiis
5. Personalize with the Sportiiiis Configuration Utility
6. Attach Sportiiiis to your Glasses
7. Pairing Sensors with Sportiiiis
8. Caring for Sportiiiis
9. Warranty and Support

1

Welcome to Sportiiiis!

Thank you for purchasing Sportiiiis. Sportiiiis is a heads-up display that guides you to your target range (zone) during running, cycling, and many other sports - while allowing you to keep your eyes on the road and maintain form. It can pair with, and receive data from any ANT+™ enabled heart rate strap, foot pod, power or speed/cadence sensor.

When properly mounted to your glasses, the boom of the Sportiiiis unit will be in your peripheral vision, so that its LEDs can tell you whether you are below, above, or in your zone by their color and position.

Through the Sportiiiis software for Windows or Mac, you can set up Sportiiiis and configure the zones for your individual needs.

Visit www.thisisant.com/directory/sportiiiis/ for a list of compatible products.

2

What's in the Box?

USB-USB micro
Charge/sync cable



(10) mini tie-wraps



Sportiiiis

(2) mounting
brackets



Heart Rate Strap (Included with model SP200HR)

3

Getting to Know Your Sportiiiis Unit

Boom

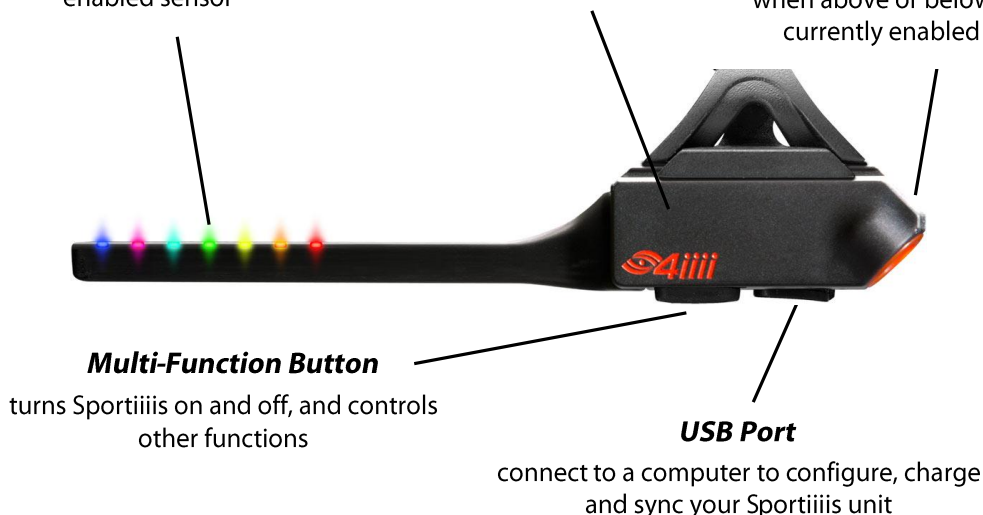
contains several LEDs (Light-Emitting-Diodes) that can be programmed by color and position to indicate where your performance is relative to the target zone for the currently enabled sensor

TipTap Sensor

changes functions by simply tapping on the side of the unit

Speaker

triggered by TipTap or (optionally) when above or below zone for currently enabled sensor


Multi-Function Button

turns Sportiiiis on and off, and controls other functions

USB Port

connect to a computer to configure, charge and sync your Sportiiiis unit

Multi-Function Button - The multi-function button is used to turn Sportiiiis on and off, as well as control a variety of other functions. It is activated by holding down the button until your unit announces the desired function. The table below describes the available button functions when Sportiiiis is powered off.

Multi-Function Button Actions

Press & Hold Button until you hear	Continue Holding Button	Release Button
"Power"	Proceed to Mode	Unit turned on/off
"Mode"	Proceed to Pairing	Switches Mode (Run/Bike)
"Pairing"	Proceed to Volume	Pairs with available sensors
"Volume"* (1 through 4)	Move to next volume level	Changes volume

* To adjust volume, hold the button until Sportiiiis announces "Volume" and then keep holding as the volume loops through 4 volume levels; release the button when the desired volume is attained

You can also use the multi-function button to check how much power is remaining in the battery of your unit by quickly pressing the button once. The LED's in the boom will light up. The further the lights continue up the boom, the more charge your unit has.

TipTap - Sportiiiis contains an accelerometer, which allows it to respond to taps on the

side of the unit.

For best results, hold the unit with your middle finger and tap sharply with your index finger.

1 Tap	Audio Feedback of currently displayed sensor
2 Taps	Announce remaining battery power



You can adjust the sensitivity of TipTap in the Sportiiiis Configuration Utility.
(See page 11 for more information)

To charge Sportiiiis, uncover the micro-USB port on the bottom of the unit and plug in the included USB 2.0 Charge/Sync Cable. Plug the other end of the cable into one of your computer's USB ports or a USB power adapter.



While the unit is connected to a power source, the LEDs will indicate the level of charge. The LEDs will blink Red when the charge level is low then begin to “stream” to yellow as the charge level increases; when two LEDs are solid and green the unit is fully charged.

Sportiiiis takes about 75 minutes to charge from a fully discharged state.

While using Sportiiiis, several factors will affect its battery life. These include LED brightness, LED blink rate, and the volume and frequency of audio announcements. (To configure these parameters go to page 8)

Sportiiiis battery life is approximately 8-9 hours under normal use.

5

Personalize Sportiiiis with the Configuration Utility

• Download and Install Software

Open a browser and go to: www.4iiii.com/support.html. Click on the “Downloads” tab and select the Application Installer for your operating system (Windows or Mac)

Windows: As the installer downloads it will ask if you want to “Run” or “Save” the file. Select “Run”. Follow the on screen prompts and when complete you’ll see a Sportiiiis icon on your desktop.

Mac: Depending on your version of Mac OS X, the installation may launch after download, or you may have to launch it manually from your downloads folder. Once launched, follow the on screen prompts to complete the installation. The Sportiiiis application will be in your Applications folder. (You can drag the Sportiiiis application icon to your dock for easy access)

• Launch the Sportiiiis Software Application

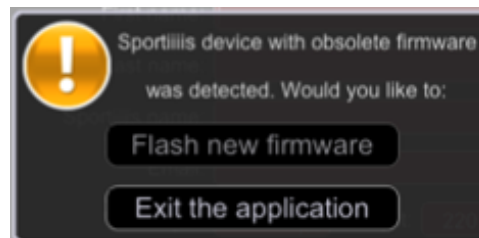
Connect Sportiiiis to your computer before launching the software

Windows: click the icon on the desktop

Mac: launch the program from the applications folder (or system dock if you have copied a shortcut there).

Note: If a newer version of firmware is available for your Sportiiiis unit the “update Firmware” dialog box will appear. Click “Flash new firmware” to continue.

Caution: do not disconnect Sportiiiis until the update is complete

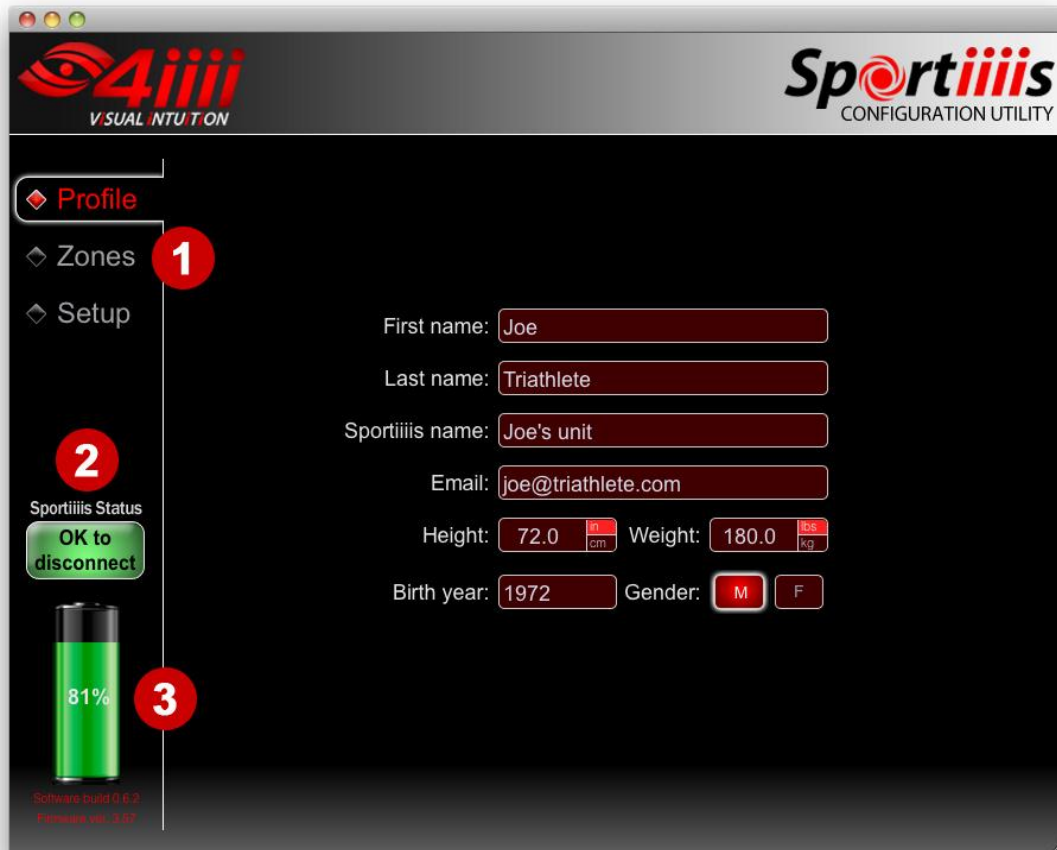


• Software/Firmware Auto Updates

By default, the Sportiiiis Configuration Utility will automatically check for software and firmware updates when the program launches. If an update is available it will be you will be notified when it is ready to download and install.

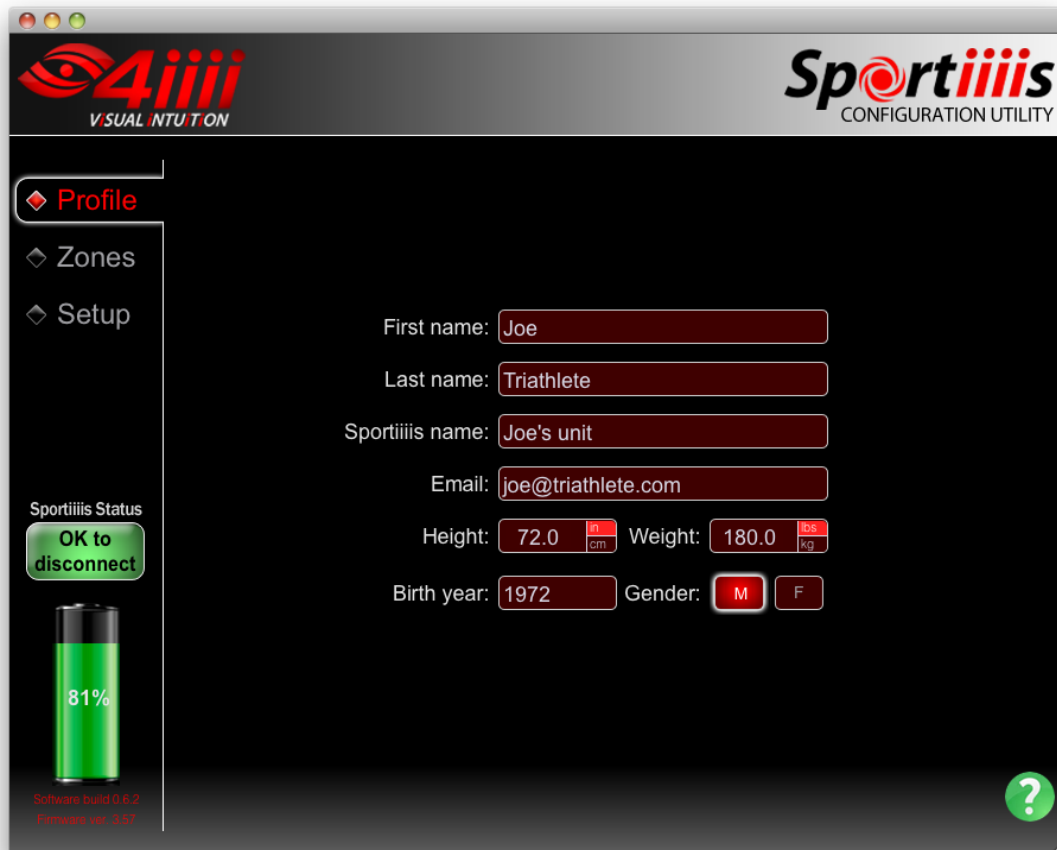


• The Sportiiiis Software Interface



- 1) **Main Navigation Tabs** – The software is divided into three sections
 - Profile – personal data
 - Zones – configuration of the LEDs
 - Setup – hardware setup such as volume, brightness, etc.
- 2) **Upload Status Button** - whenever you make a change in the Sportiiiis Software Application, the Upload Status Button will indicate that it is “Ready to upload.” Click this button to save the changes to Sportiiiis. When the upload is complete, the Upload Status Button will indicate “OK to disconnect.”
- 3) **Battery Status Indicator** – indicates the approximate charge level of the battery in Sportiiiis.

The Profile Tab



The screenshot shows the 'Profile' tab of the Sportiiiis Configuration Utility. The interface has a dark theme. On the left, there is a sidebar with three menu items: 'Profile' (selected with a red diamond), 'Zones', and 'Setup'. Below the sidebar, there is a 'Sportiiiis Status' section with a green 'OK to disconnect' button and a battery icon showing 81% charge. At the bottom left of the sidebar, it says 'Software build 0.6.2' and 'Firmware ver. 3.57'. The main area contains several input fields: 'First name' (Joe), 'Last name' (Triathlete), 'Sportiiiis name' (Joe's unit), 'Email' (joe@triathlete.com), 'Height' (72.0 cm), 'Weight' (180.0 kg), 'Birth year' (1972), and 'Gender' (M selected, F unselected). A green question mark icon is in the bottom right corner.

4iiii
VISUAL INTUITION

Sportiiiis
CONFIGURATION UTILITY

◆ Profile
◆ Zones
◆ Setup

Sportiiiis Status
OK to disconnect

81%

Software build 0.6.2
Firmware ver. 3.57

First name: Joe
Last name: Triathlete
Sportiiiis name: Joe's unit
Email: joe@triathlete.com
Height: 72.0 cm Weight: 180.0 kg
Birth year: 1972 Gender: M F

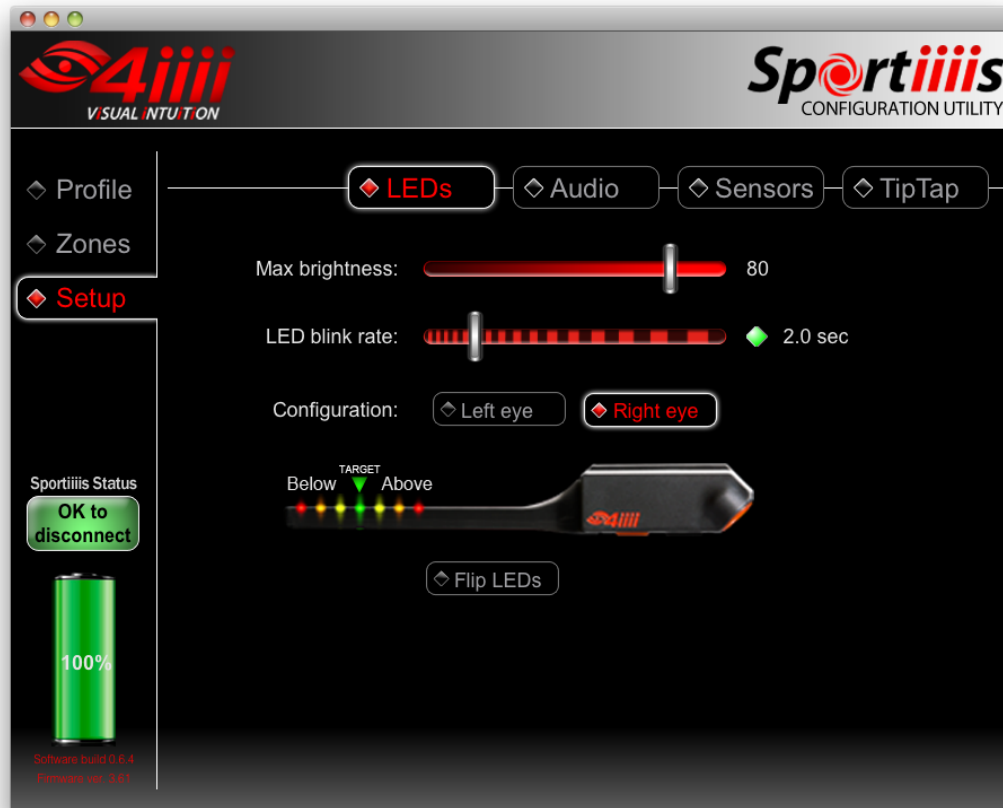
?

Enter your name, a “nickname” for your Sportiiiis unit, your email address, height, weight, year of birth, and gender in the Profile screen.

• The Setup Tab

To set the preferences up for your Sportiiiis unit, click on the “Setup” tab in the left column and choose the parameter you would like to configure (LEDs, Audio, Sensors, TipTap) on the upper right.

Setup>LEDs



Max brightness – sets the maximum brightness of the LEDs. In most cases a brightness level of 80 is appropriate for outdoor activity with the Sportiiiis boom located on the inside of your eyewear.

Note: Sportiiiis features an ambient light detector to help balance the LED brightness for changing conditions.

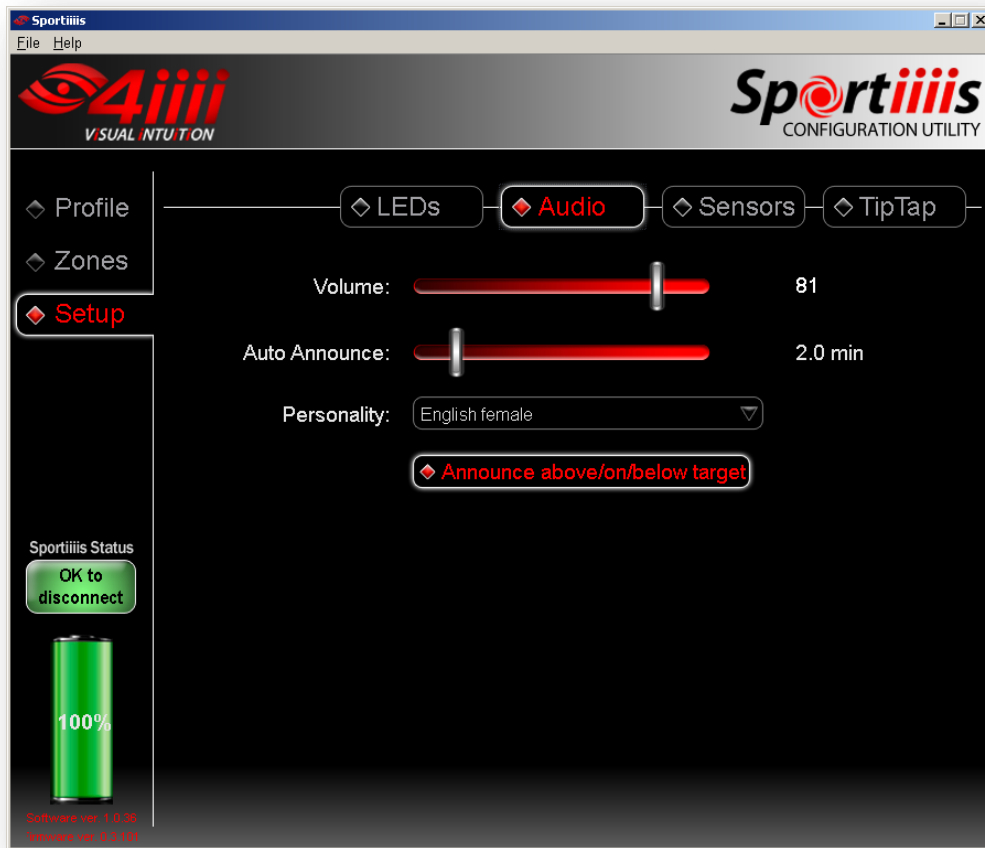
LED blink rate – This adjusts the blink rate of the target zone LED. Each LED further from the target zone will automatically blink at a faster rate.

Configuration – Sportiiiis can be setup for left eye or right eye use.

NOTE: For increased safety while cycling, it is recommended that you use the eye furthest from the road to view your Sportiiiis unit. Thus, in countries where you drive on the right side of the roadway, it is recommended that you mount your Sportiiiis unit under your right eye, and in countries where you drive on the left side of the roadway, you mount your Sportiiiis unit under your left eye. This allows for unobstructed vision while looking over your shoulder for approaching cars.

Flip LEDs – This option flips the “below” and “above” target LED’s position. (left to right becomes right to left)

Setup>Audio



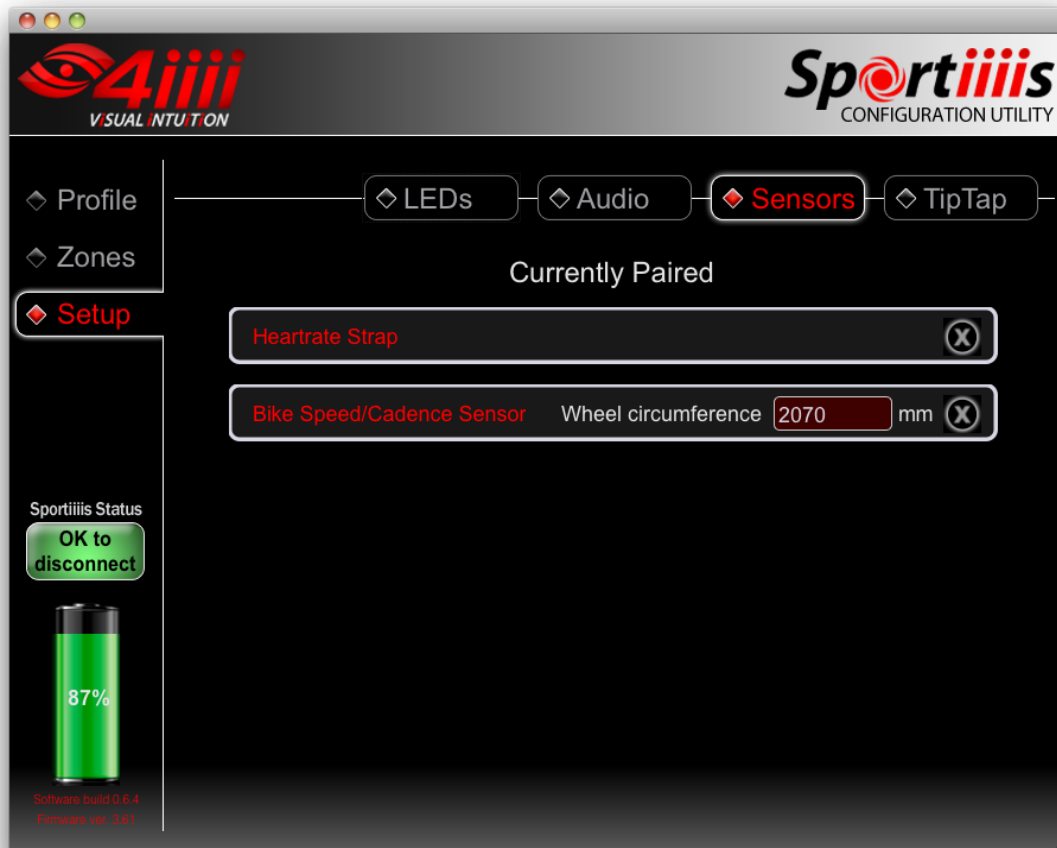
Volume – typically a level of approximately 80-85 is acceptable under normal circumstances.

Auto-Announce – interval at which your Sportiiiis unit will announce the current data from all paired sensors for which “Include in Auto-Announce” is selected (see Zones tab). To turn auto-announce off, move the slider all the way to the left.

Personality – Choose a male or female voice for verbal updates.

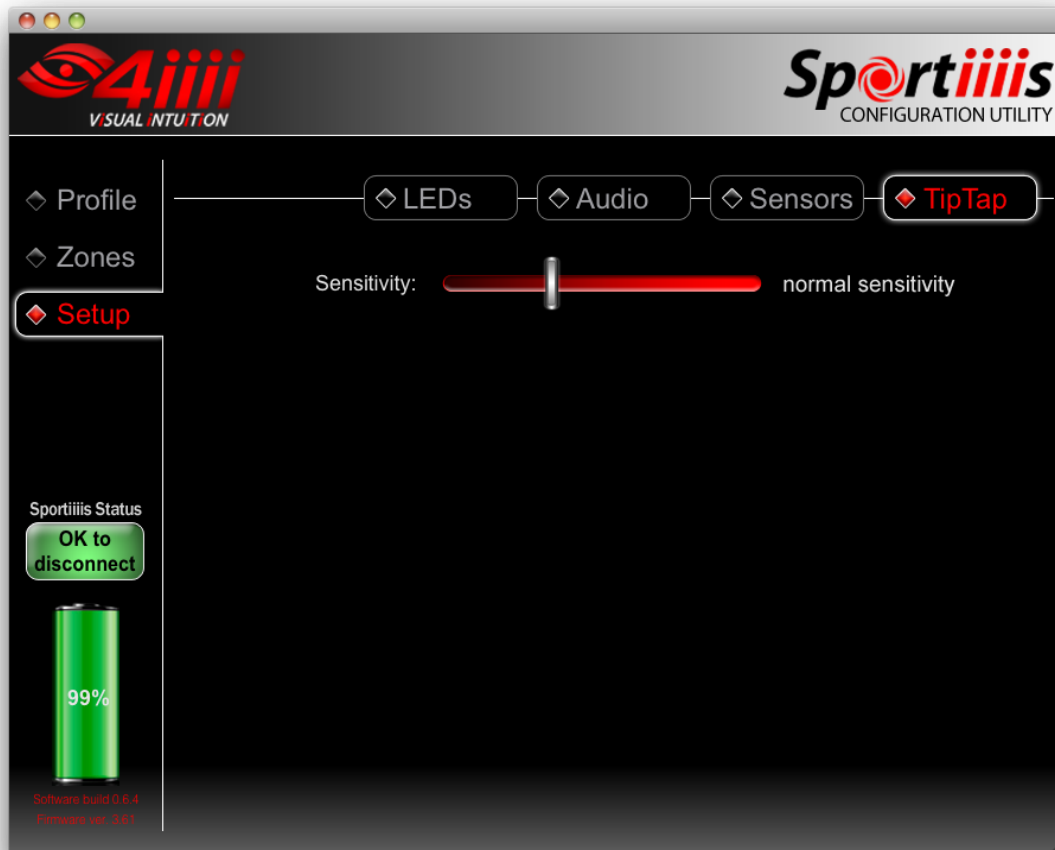
Announce above/on/below target – Sportiiiis will tell you when your “in-target” status changes, either going above, below, or on target.

Setup>Sensors



Sensors that are currently paired with Sportiiiis will appear here, to delete a sensor click the "X" on the sensor entry. . Some sensors may have an area to input data, such as wheel circumference for a bike speed sensor as shown above.

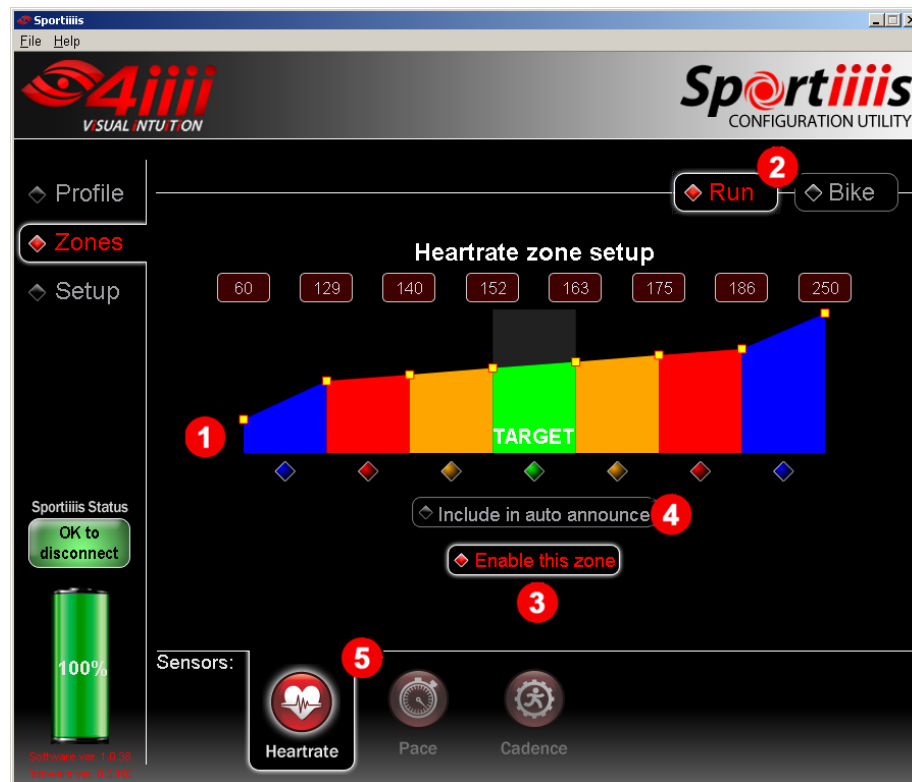
Setup>TipTap



Two important features of Sportiiiis are controlled by simply tapping on the side of the unit. A single tap will give you audio feedback of the current sensor being displayed and two taps will switch to the next sensor (if more than one sensor is paired). The slider adjusts the sensitivity of the TipTap function.

Sensitivity – “Normal” sensitivity is a good starting point for most applications.

The Zones Tab



Overview

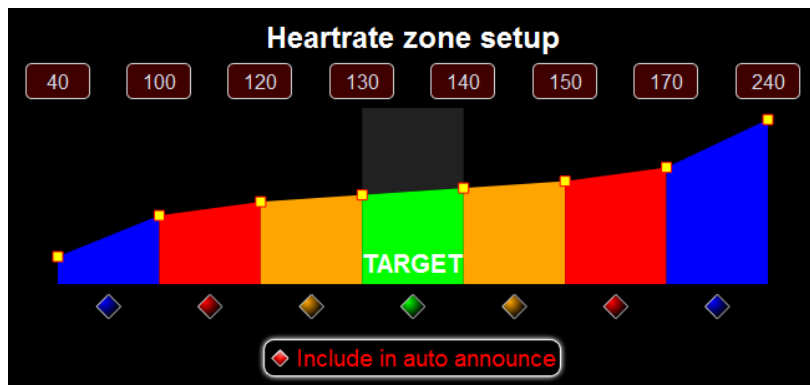
The Zone Adjustment widget - The Zone adjustment widget controls the 7 LEDs on the Sportiiiis boom and each LED is represented by a colored section with yellow nodes on their outer limits. Each zone's start and end are changed by dragging the yellow nodes (see example setup below)

- 1) The center green (or whichever color you choose to make it) section represents your target zone for the current activity, and the LEDs to either side are set up to guide you to that target zone. The color of each LED can be changed by clicking on the diamond shaped LED icons below the zones. The Sportiiiis configuration application will show you the available LED colors on your particular Sportiiiis hardware.
- 2) **Run / Bike selectors** - You can setup zone profiles for Run and Bike sensors separately, then change between them while using Sportiiiis. (see page 3 for more)
- 3) **“Enable this zone” button** – Choose whether or not you want this zone enabled on your Sportiiiis unit. All paired sensors are included.
- 4) **“Include in Auto Announce” button** - Sportiiiis can audibly update you on all active sensors at regular intervals. Selecting this button will include the current sensor in this announcement. (the interval is configured in the Setup>Audio section, covered on page 9)
- 5) **The Sensor Selectors** - Select which sensor you want to configure. Sensors that are paired with Sportiiiis are illuminated, those not paired are greyed out. Note: You can still select and setup zones for sensors that are not currently paired. (see page 17 for information on pairing sensors with Sportiiiis)

Example - Setting up a Zone workout:

In this example, we'll set up Sportiiiis for a run with a target heart rate zone of 130-140 bpm.

- a. Click and drag the yellow node on the left side of the target zone until the value in the corresponding box has reached 130. Repeat with the yellow node on the right side of the target zone, setting this to 140. Alternatively you can click in the box above the zone widget and enter your numbers directly, using tab to navigate through the boxes.



- b. Next, work your way out to the left and right of your target zone and create the zones that will help guide you to your target. We recommend the first adjacent zones be 10 bpm wide and the second, 20 bpm.
- c. Click the “include in auto announce” button if you would like the current sensor included in regular spoken updates (go to Setup > Audio to configure how often these announcements occur).
- d. When you are finished, click on the “Ready to Upload” button. This will upload and save the values to the Sportiiiis unit.
- e. Repeat this procedure for other sensors you'd like to configure by clicking on the icons at the bottom of the screen
- f. To change the colours of the LEDs, simply click on the colored LED icon below the zone you wish to change.

• Speed/Pace Sensor Special Buttons



Pace/Speed Selector – use to choose whether you'd like to use pace (minutes/mile(km)) or speed (miles(km)/hour) for footpods and bike speed sensors.

Imperial/Metric – selects Imperial (miles) or Metric (kilometers) units.

6

Attach Sportiiiis to Your Glasses**• Notes About Mounting Your Sportiiiis Unit**

For increased safety while cycling, it is recommended that you use the eye furthest from the road to view your Sportiiiis unit. Thus, in countries where you drive on the right side of the roadway, it is recommended that you mount your Sportiiiis unit under your right eye, and in countries where you drive on the left side of the roadway, that you mount your Sportiiiis unit under your left eye.

Also, your Sportiiiis unit should be mounted under your line of sight so that its LEDs appear in your peripheral vision. Please make sure that your Sportiiiis unit does not obstruct your vision.



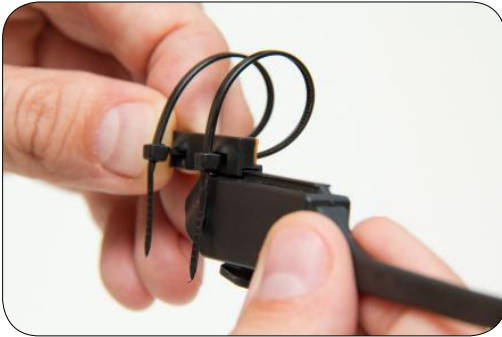
WARNING: Be very careful to mount the Sportiiiis unit securely to your eyewear to ensure the boom will not come in contact with your eye during use.

• Sportiiis Installation

1. Insert tie wraps into mounting bracket loosely, as shown below:



2. Slide the Sportiiis unit into the mounting bracket.



3. Align the Sportiiis unit on your glasses as you'd like it to be mounted. At this point, choose whether you'd like the boom on the inside or the outside of the lens.



Boom Outside Lens

Boom Inside Lens

4. Carefully tighten the tie wraps to fix the mounting bracket in place.



5. Slide the Sportiiis unit off of the mounting bracket and cinch down the tie wraps tightly.



6. Cut the excess tails from the tie wraps.



7. Slide your Sportiiis unit back onto the mount, bend the boom into its final position.



7

Pairing ANT+ Sensors with Sportiiiis**• Pairing ANT+ Sensors**

For best results perform pairing at least 30 feet away from any active ANT+ devices that you would **not** like to pair with your Sportiiiis unit.

- 1) Make sure that all ANT+ sensors that you would like to pair with are active* and within range (< 6ft)
- 2) With Sportiiiis off, hold down the button until you hear Sportiiiis say "Pairing"
- 3) Release the button - Sportiiiis will say "Start Pairing"
- 4) Sportiiiis will enunciate all sensors that it finds and pairs with

*To activate a HR strap, put on the strap. For a bike speed/cadence sensor, spin your wheel to activate your sensor. For a footpod, shake the footpod, or move your running shoes if attached.

• Unpairing ANT+ Sensors

Within the Sensors tab of the Sportiiiis Configuration Utility, you may remove paired sensors from Sportiiiis individually (for more info see page 10)

• Switching between Run and Bike mode

You can switch the zone profiles on-the-fly between Bike and Run as setup in the Configuration Utility.

- 1) To tell which profile your unit is currently in, turn your unit on and it will list your profile as well as your current battery power.
- 2) Hold down the multifunction button until the Sportiiiis announces "Mode". When it announces "Mode" it will change your unit from its current profile.

8

Caring for Sportiiiis

Keep your Sportiiiis unit clean by wiping it off with a damp cloth after each use, and make sure that, when you store it, the boom is protected from excessive bending (do not store it on your glasses if folded up)

9

Warranty and Support

• Technical Support

Available from 4iiii by both phone and email from 9am-5pm Mountain time.

Phone: 1.800.218.3095 / 1.403.800.3095

Email: support@4iiii.com

User Forum: forum.4iiii.com

• Warranty

4iiii Innovations Inc. ("4iiii") warrants this product to be free from defects in material and workmanship, under normal use, for a period of one (1) year from the date of original purchase (the invoice date) to the original purchaser. Defects that have resulted from improper or unreasonable use or maintenance, accident, excess moisture, insects, improper or inadequate packing for shipment, lightning, power surges, or unauthorized tampering, alteration or modification are not covered under the limited warranty. 4iiii will, at its sole discretion, repair or replace the defective product with a comparable product, at no charge to the customer for parts or labor, with the customer to be responsible for all shipping and handling costs [and with return shipping and handling costs to be paid for by 4iiii after the product has been repaired or replaced]. Replacement products may be new, refurbished or reconditioned and are warranted for the unexpired period of the original purchase, or 60 days from the date of shipment, whichever is greater. Any products replaced by 4iiii shall be the property of 4iiii.

WHERE PERMITTED, THE PROVISIONS OF THIS LIMITED WARRANTY ARE TO SUPERCEDE AND REPLACE ANY OTHER WRITTEN WARRANTY, WHETHER EXPRESS OR IMPLIED, WRITTEN OR ORAL, INCLUDING ANY WARRANTY OF MERCHANTABILITY OR FITNESS FOR A PARTICULAR PURPOSE.

IN NO EVENT SHALL 4iiii BE LIABLE FOR ANY DIRECT OR INDIRECT DAMAGES OR OTHER RELIEF ARISING FROM ANY SPECIAL, INCIDENTAL OR CONSEQUENTIAL DAMAGES. To obtain warranty service, contact 4iiii for shipping instructions and an RMA tracking number. Return your product, freight prepaid, along with the original sales receipt as a required proof of purchase for warranty repairs, with the RMA tracking number written on the outside of the package and mail to 4iiii.

WARNING: This limited warranty becomes null and void if the product is repaired by anyone other than an authorized person of 4iiii.

Compliance

This device complies with Part 15 of the FCC Rules. Operation is subject to the following two conditions: (1) this device may not cause harmful interference, and (2) this device must accept any interference received, including interference that may cause undesired operation.

Any changes or modifications of this product, not approved by manufacturer will void the user's authority to operate the equipment.

This device complies with Industry Canada licence-exempt RSS standard(s). Operation is subject to the following two conditions: (1) this device may not cause interference, and (2) this device must accept any interference, including interference that may cause undesired operation of the device.

Le présent appareil est conforme aux CNR d'Industrie Canada applicables aux appareils radio exempts de licence. L'exploitation est autorisée aux deux conditions suivantes : (1) l'appareil ne doit pas produire de brouillage, et (2) l'utilisateur de l'appareil doit accepter tout brouillage radioélectrique subi, même si le brouillage est susceptible d'en compromettre le fonctionnement.



This product is ANT+ certified and complies with the following specified ANT+ Device Profiles:

